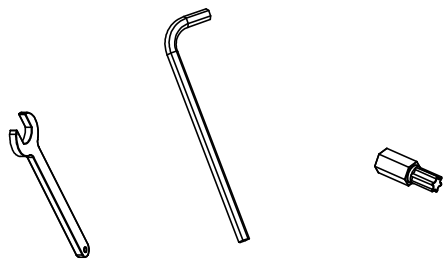
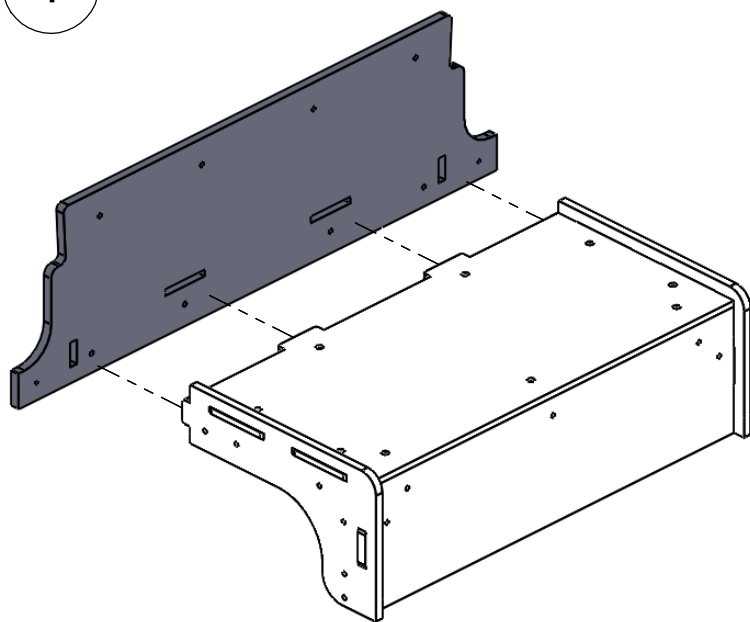


INST_12_39

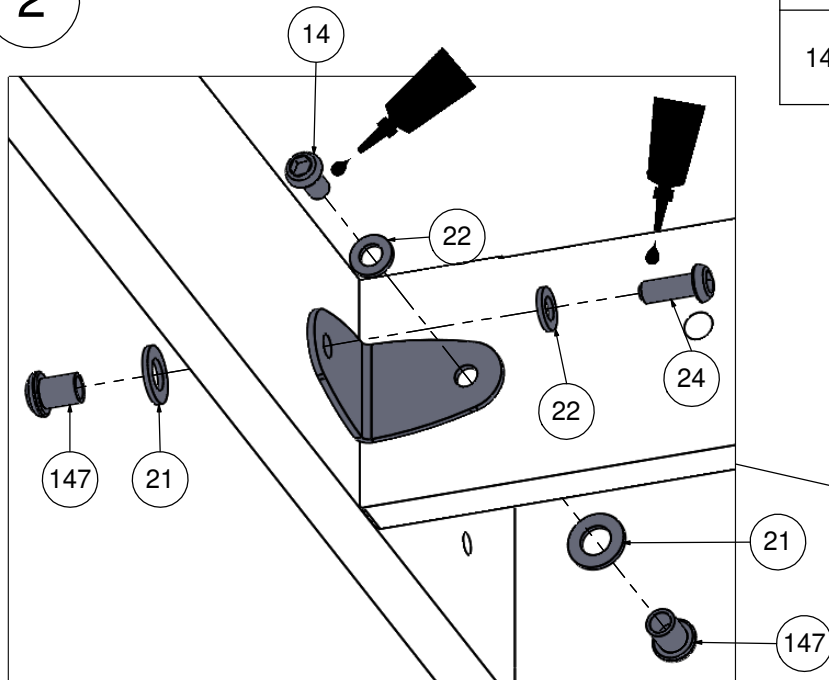


Nr. 10 Nr. 4 Nr. T30

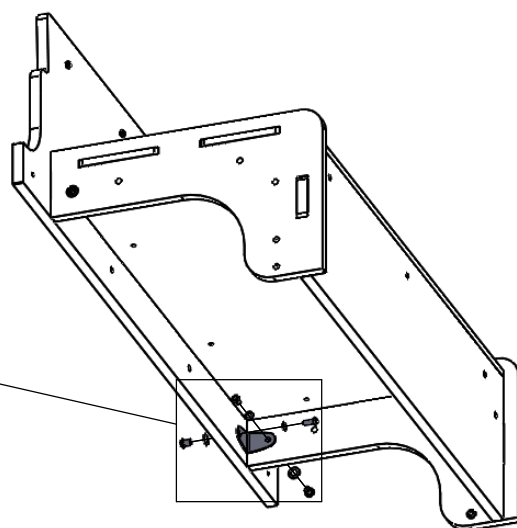
1



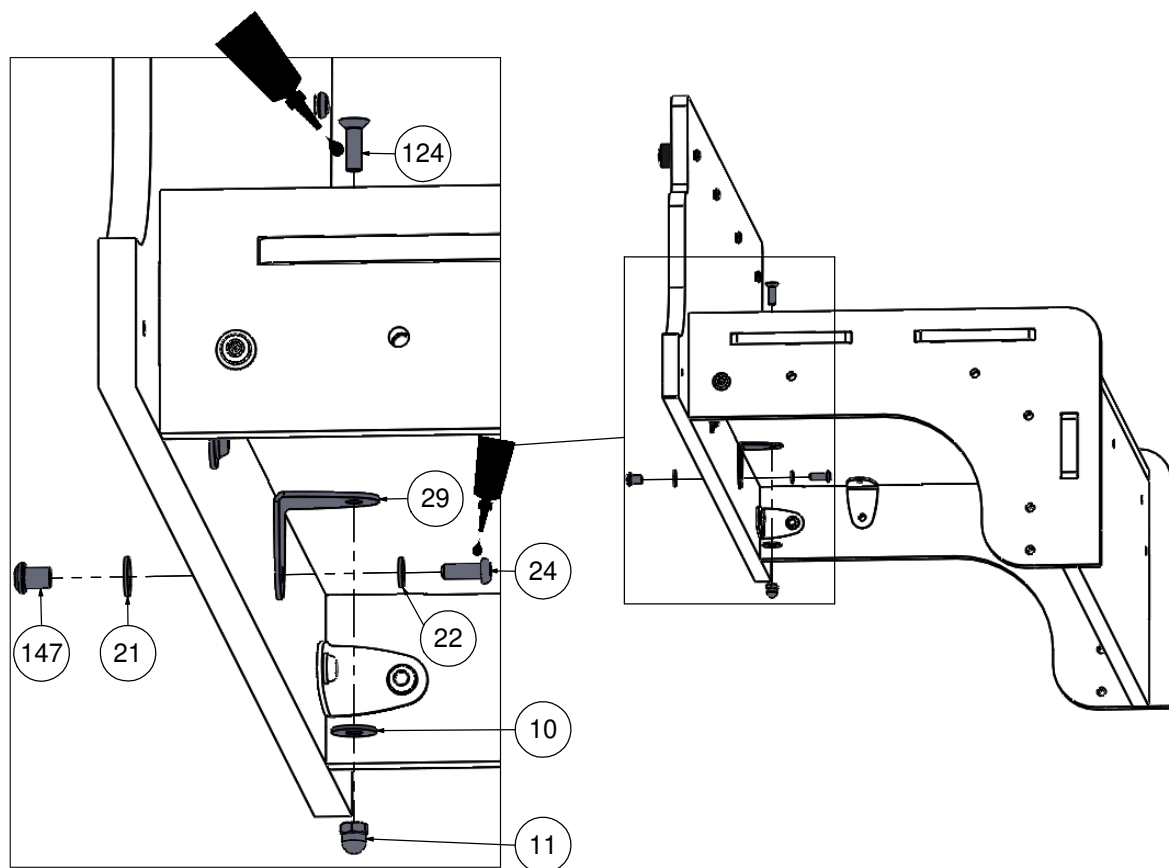
2



Nr	Σ	Element		
10	8		DIN 9021	6x18
11	2		DIN 1587	M6
14	2		ISO 7380	M6x12
15	4		ISO 7380	M6x30
16	6		-	K1_d21_B
17	6		-	Z1_d21_B
18	6		DIN 985	M6 (OC)
21	6		DIN 125	8x16
22	12		DIN 125	6x12
24	4		ISO 7380	M6x16
25	2		ISO 7380	M6x35
29	4		-	K_5_A2_g2_G_v2
58	1		-	LOCTITE
124	2		DIN 7991	M6x20
147	6		-	M6x10

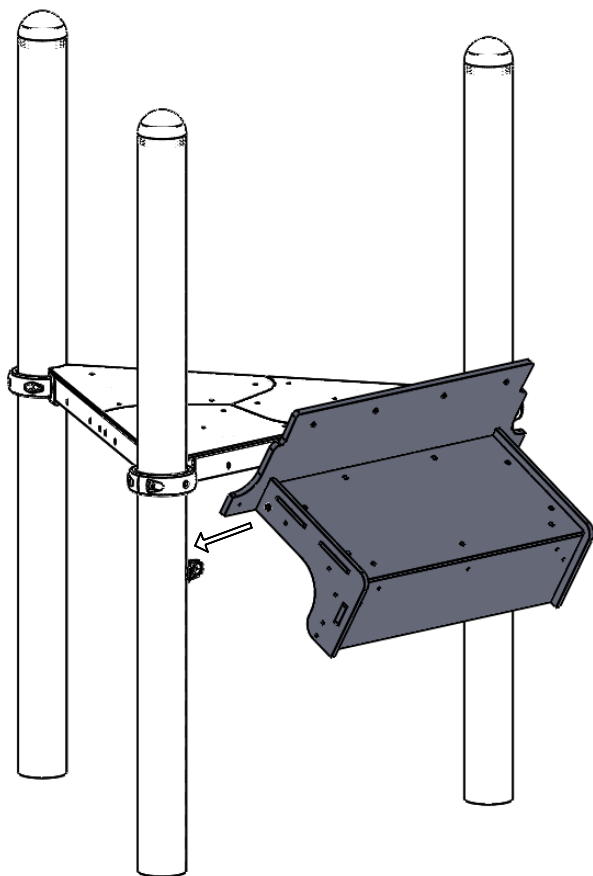


3

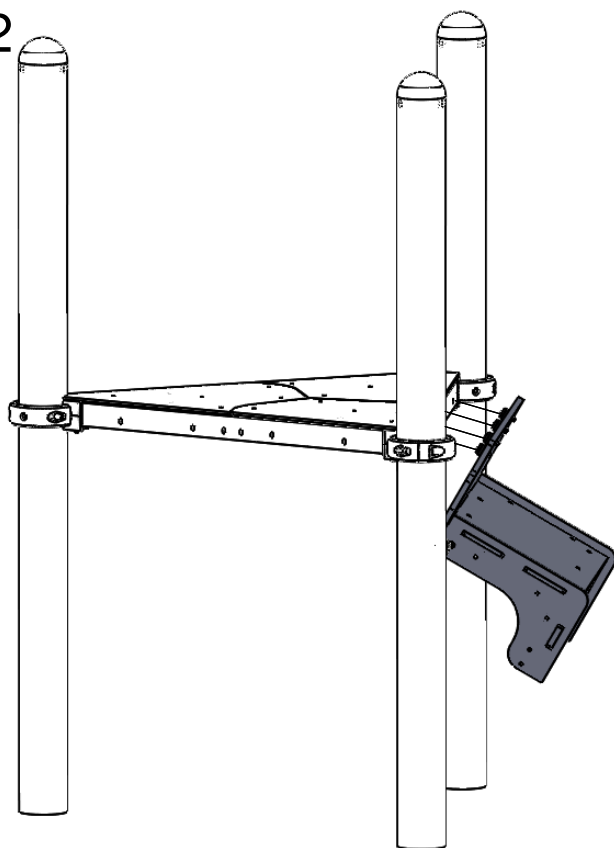


4

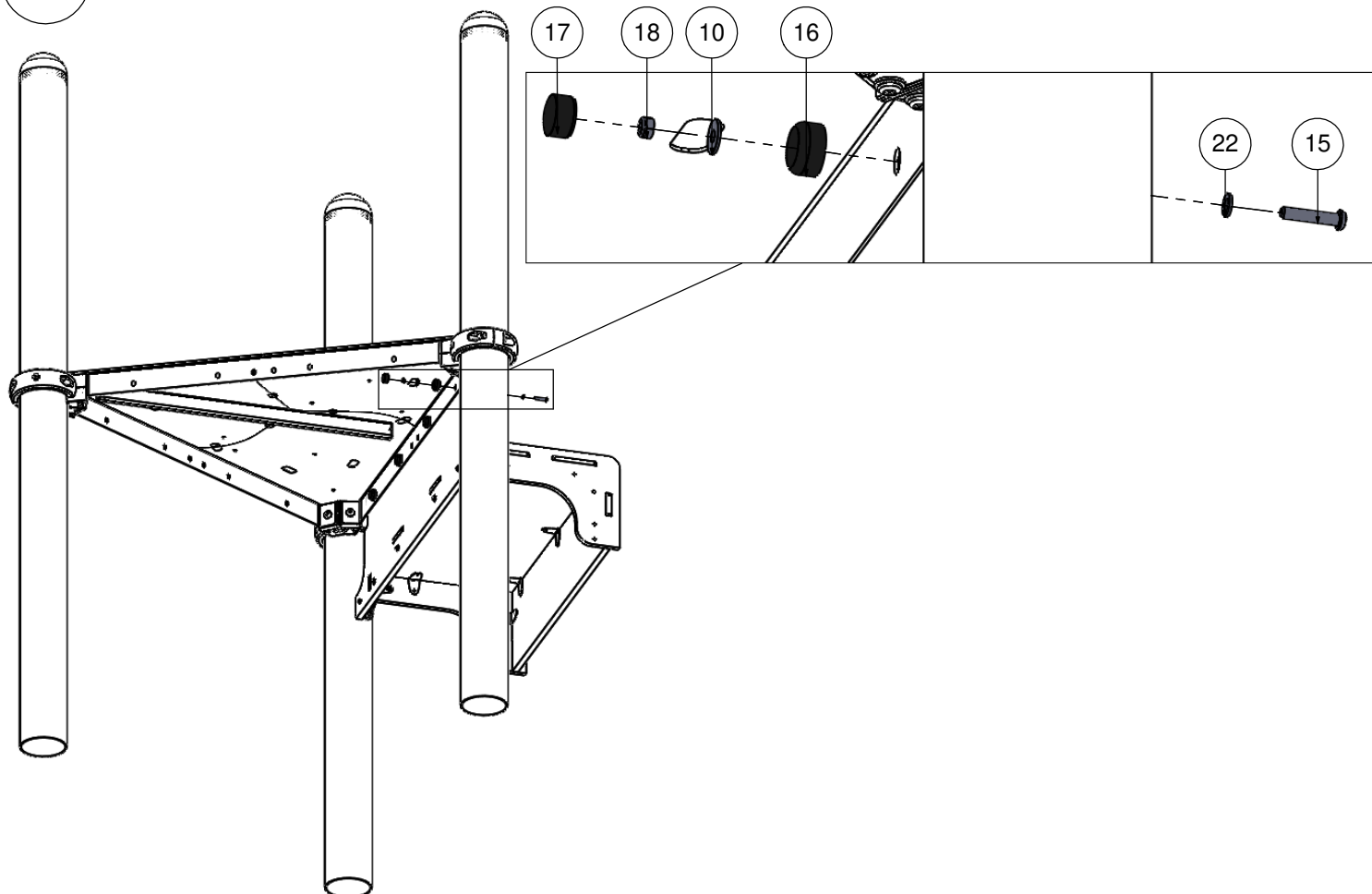
4.1



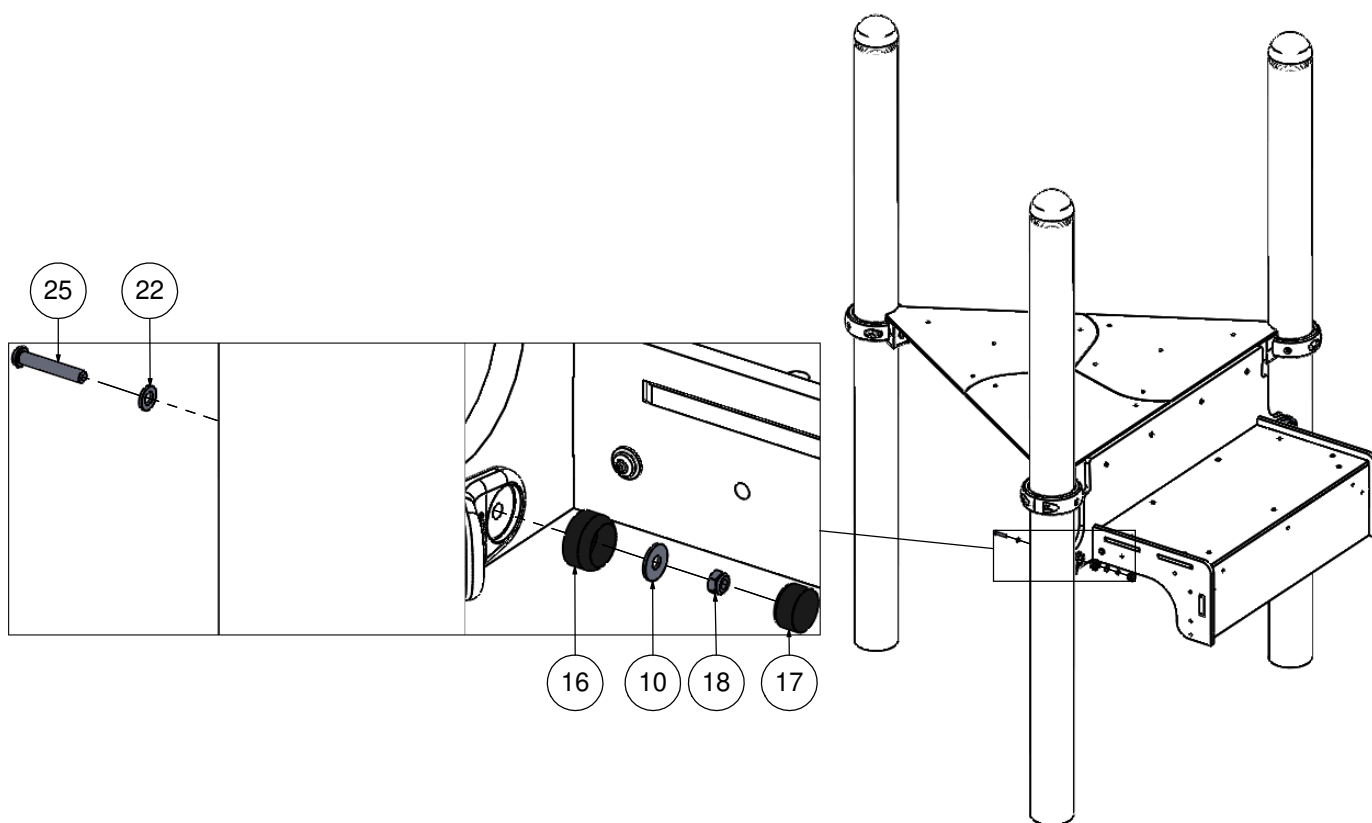
4.2



5



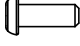





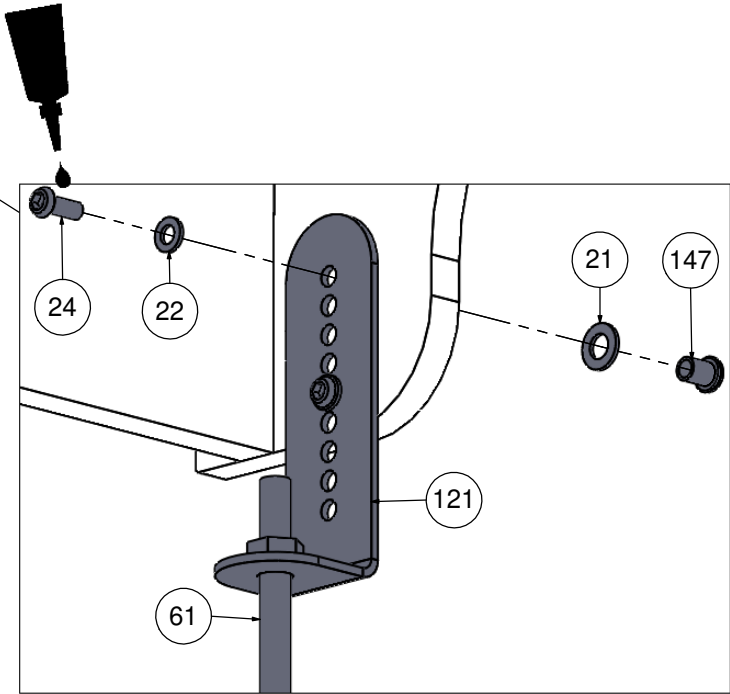
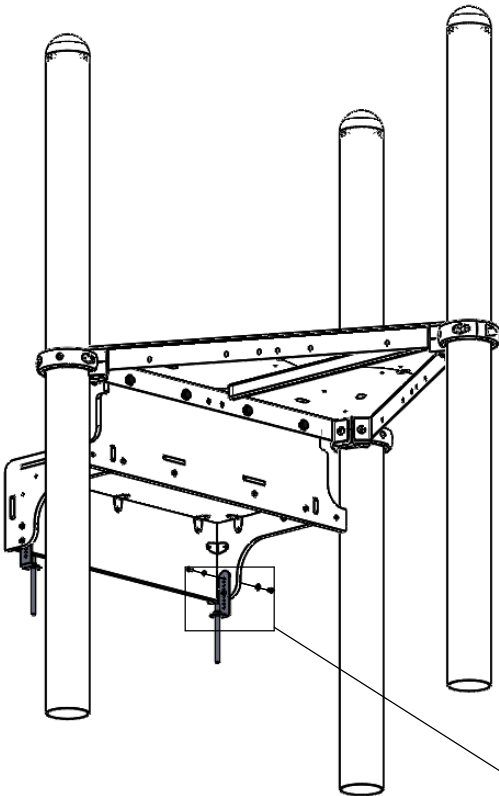
6



7






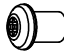
F5

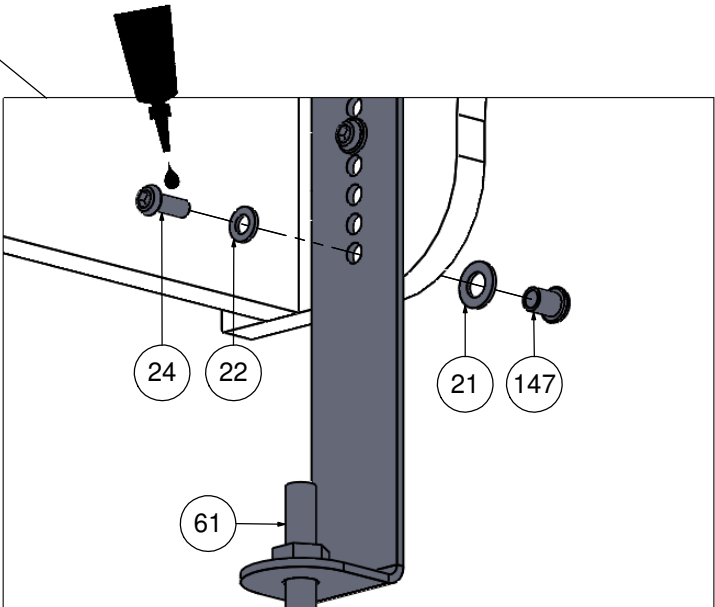
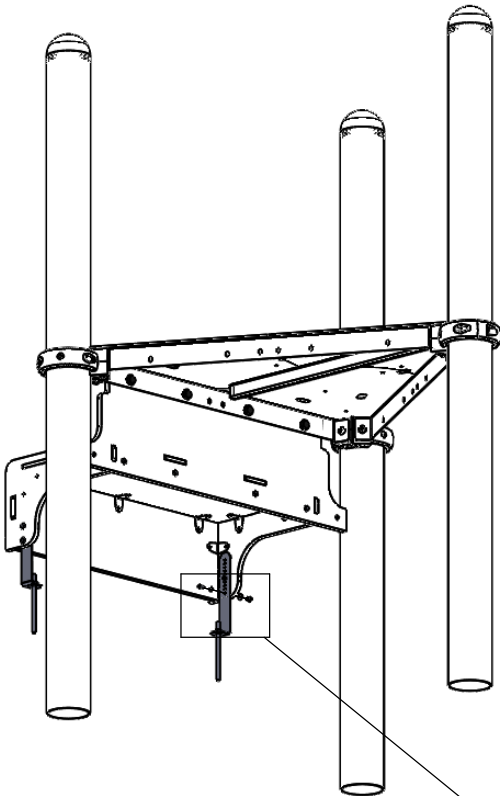
Nr	Σ	Element		
21	4		DIN 125	8x16
22	4		DIN 125	6x12
24	4		ISO 7380	M6x16
61	2		-	KL105 (OC)
121	2		-	7100_5_A2_g3_G_v1
147	4		-	M6x10



7






F10

Nr	Σ	Element		
21	4		DIN 125	8x16
22	4		DIN 125	6x12
24	4		ISO 7380	M6x16
61	2		-	KL105 (OC)
136	2		-	1100_6_A2_g3_G_v2
147	4		-	M6x10



7

F40

Nr	Σ	Element		
21	4		DIN 125	8x16
22	4		DIN 125	6x12
24	4		ISO 7380	M6x16
61	2		-	KL105 (OC)
147	4		-	M6x10

