

INST_14_93

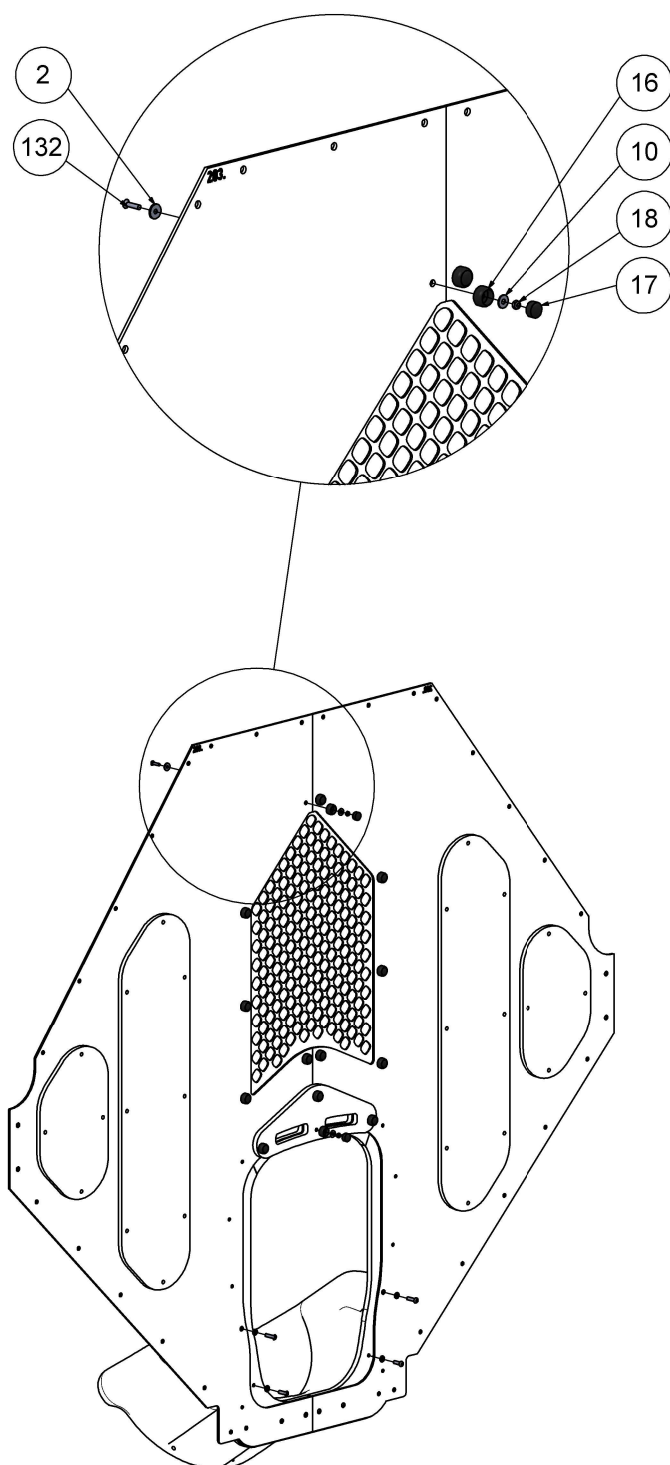


Nr. 4, 5

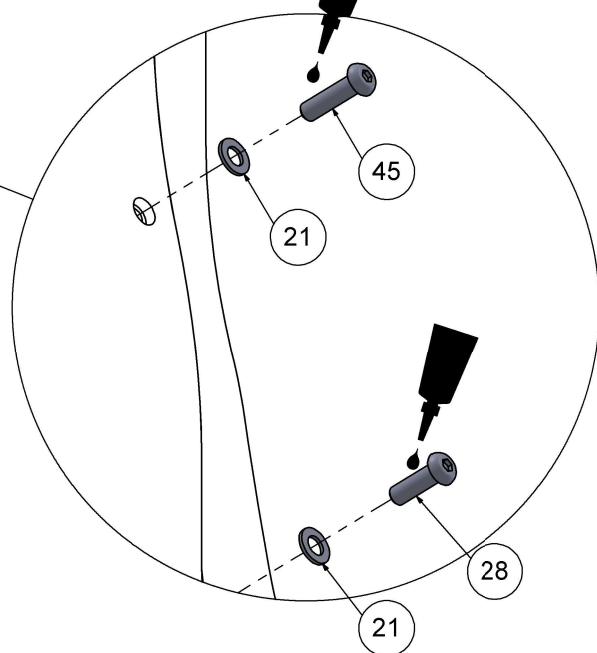
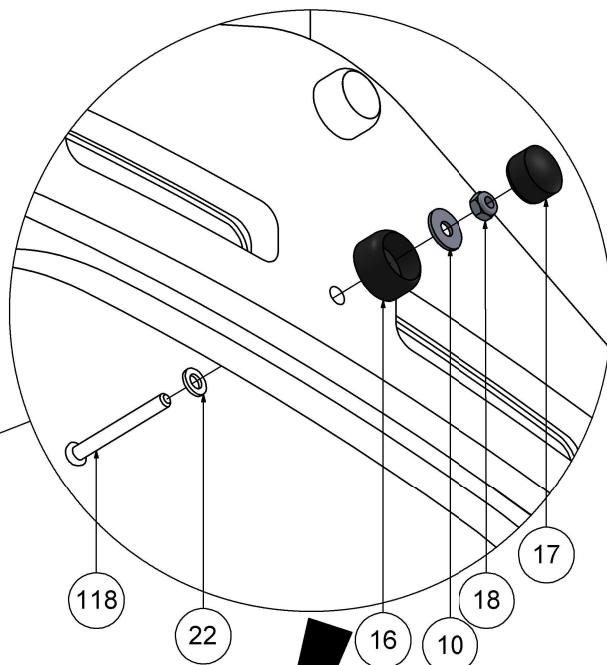
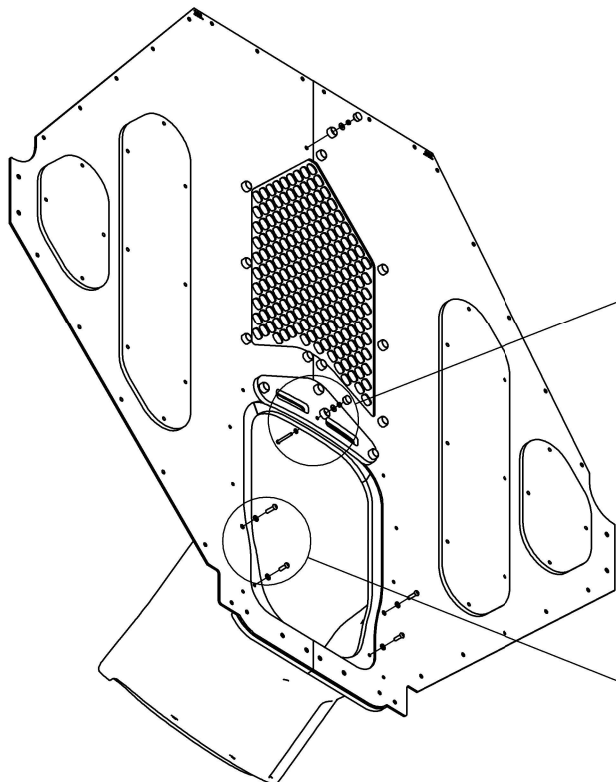


Nr. 10, 13

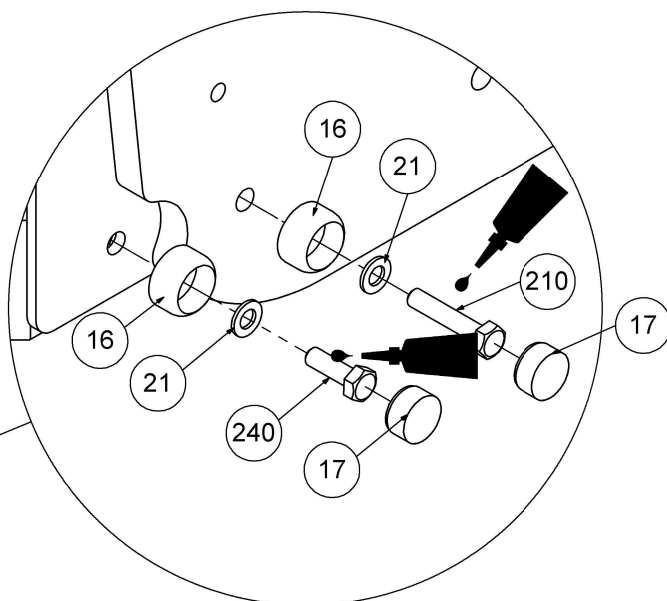
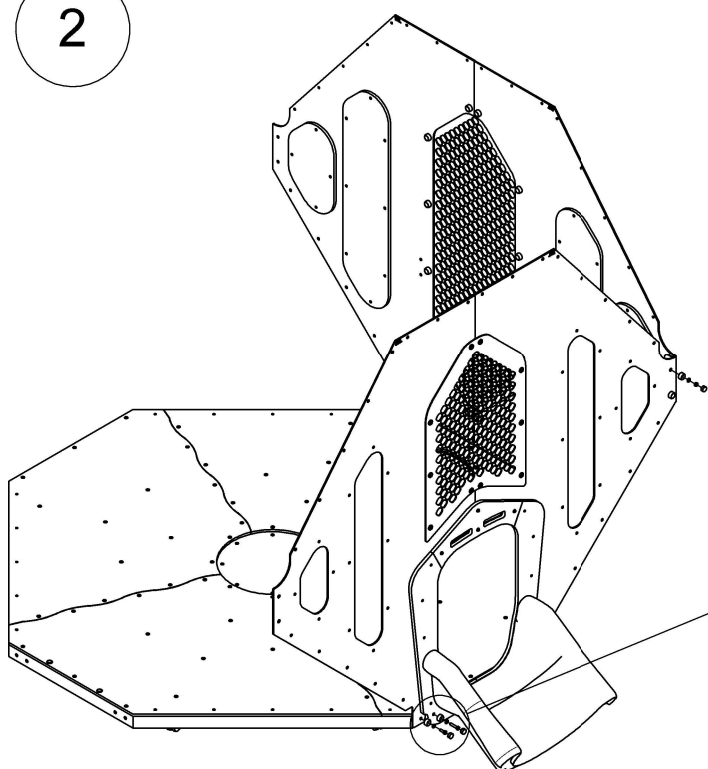
1

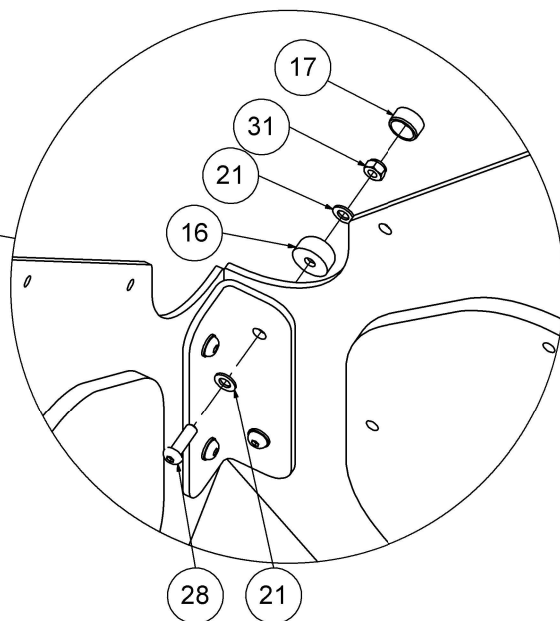
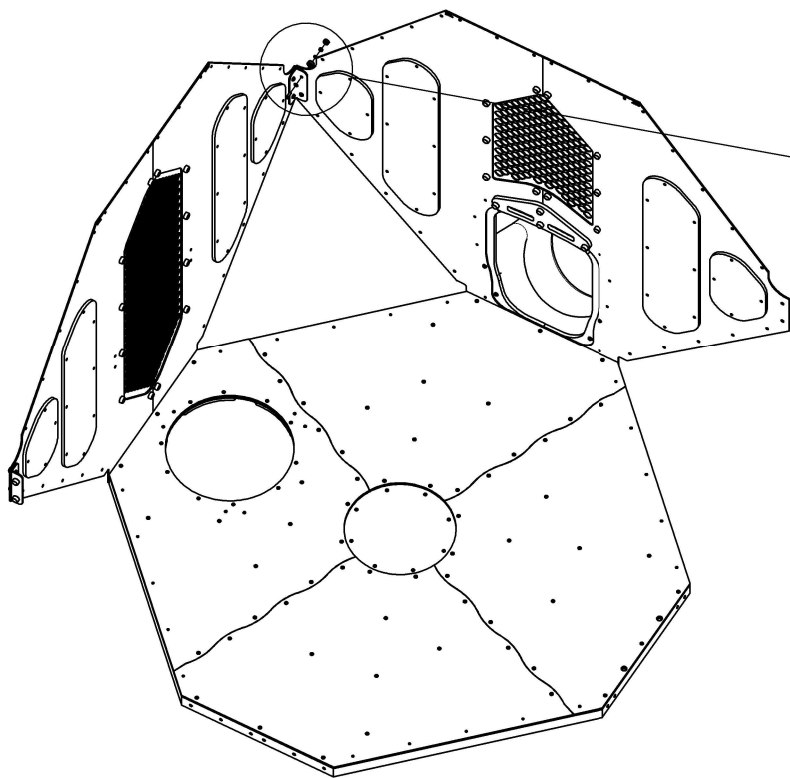


Nr	Σ	Element		
2	10		-	W6x60
10	14		DIN 9021	6x18
16	22		-	K1_d21_B
17	22		-	Z1_d21_B
18	14		DIN 985	M6 (OC)
21	16		DIN 125	8x16
22	4		DIN 125	6x12
28	8		ISO 7380	M8x25
30	4		DIN 9021	8x24
31	4		DIN 985	M8 (OC)
45	4		ISO 7380	M8x30
58	1		-	LOCTITE
118	4		ISO 7380	M6x50
132	10		DIN 7991	M6x25
210	2		DIN 933	M8x40 (OC)
240	2		DIN 933	M8x25 (OC)



2





3

